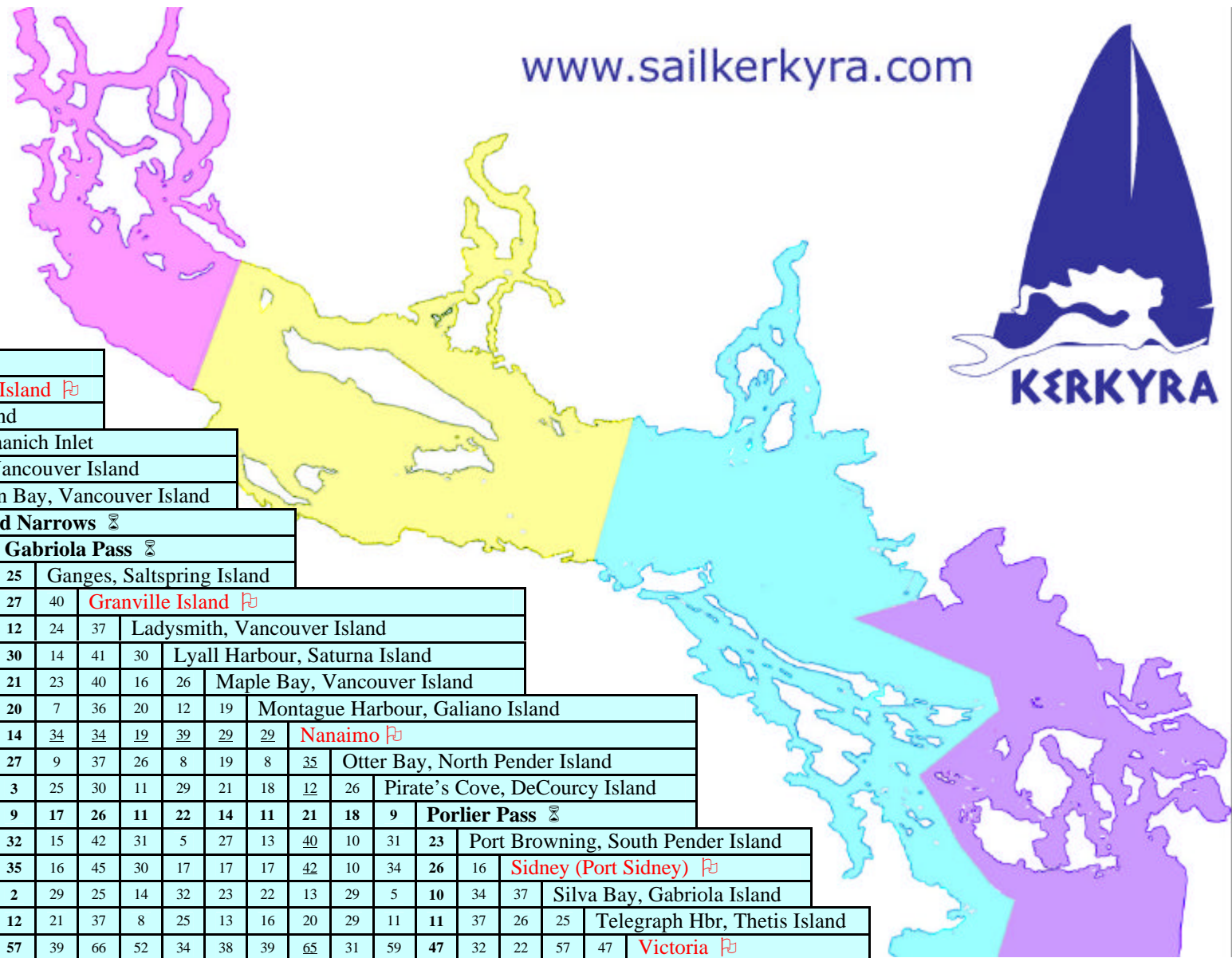




Stuart Island, Bute Inlet							
24	Gorge Harbour, Cortes Island						
28	28	Pendrell Sound					
27	20	11	Prideaux Haven				
20	16	15	8	Refuge Cove, West Redonda Island			
20	17	18	11	4	Squirrel Cove, Cortes Island		
26	19	13	4	8	11	Tenedos Bay	
18	25	23	13	21	23	18	Toba Inlet

68	49	58	51	47	49	50	64	Boho Bay, Lasqueti Island						
49	31	43	35	31	32	34	48	30	Comox,					
41	27	34	27	23	24	26	40	30	20	Powell River				
75	56	65	57	53	55	56	70	12	41	30	Smuggler Cove, Thormanby Island			



Measurements are in nautical miles and are shortest possible sailing distances.

Assume 70% of boat speed to allow for sailing angles.

Consult tide tables and consider currents and timing of tides in passes.

55	83	77	49	<b>Active Pass</b> ⌚																												
-	-	-	-	13	<b>Bedwell Harbour, S. Pender Island</b> 🇨🇦																											
41	70	63	32	31	44	<b>Snug Cove, Bowen Island</b>																										
-	-	-	-	21	20	52	<b>Brentwood Bay, Saanich Inlet</b>																									
-	-	-	-	19	28	35	26	<b>Chemainus, Vancouver Island</b>																								
-	-	-	-	19	17	45	13	17	<b>Cowichan Bay, Vancouver Island</b>																							
28	55	52	25	27	35	31	38	14	29	<b>Dodd Narrows</b> ⌚																						
32	60	56	27	24	33	23	36	13	27	8	<b>Gabriola Pass</b> ⌚																					
-	-	-	-	9	15	40	22	20	20	28	25	<b>Ganges, Saltspring Island</b>																				
46	75	67	37	31	44	11	52	36	46	35	27	40	<b>Granville Island</b> 🇨🇦																			
-	-	-	-	24	33	35	31	6	22	13	12	24	37	<b>Ladysmith, Vancouver Island</b>																		
-	-	-	-	10	9	41	24	25	22	33	30	14	41	30	<b>Lyll Harbour, Saturna Island</b>																	
-	-	-	-	22	22	39	17	11	8	23	21	23	40	16	26	<b>Maple Bay, Vancouver Island</b>																
-	-	-	-	5	14	36	23	16	21	23	20	7	36	20	12	19	<b>Montague Harbour, Galiano Island</b>															
24	52	48	22	35	41	29	44	20	35	6	14	34	34	19	39	29	29	<b>Nanaimo</b> 🇨🇦														
-	-	-	-	6	8	37	17	21	15	29	27	9	37	26	8	19	8	35	<b>Otter Bay, North Pender Island</b>													
-	-	-	-	23	32	26	35	12	27	6	3	25	30	11	29	21	18	12	26	<b>Pirate's Cove, DeCourcy Island</b>												
40	68	63	35	16	24	25	28	10	20	12	9	17	26	11	22	14	11	21	18	9	<b>Porlier Pass</b> ⌚											
-	-	-	-	11	8	42	25	26	23	34	32	15	42	31	5	27	13	40	10	31	23	<b>Port Browning, South Pender Island</b>										
-	-	-	-	14	10	45	14	24	12	36	35	16	45	30	17	17	17	42	10	34	26	16	<b>Sidney (Port Sidney)</b> 🇨🇦									
31	58	55	25	25	35	22	38	15	29	10	2	29	25	14	32	23	22	13	29	5	10	34	37	<b>Silva Bay, Gabriola Island</b>								
-	-	-	-	20	28	35	27	5	18	14	12	21	37	8	25	13	16	20	29	11	11	37	26	25	<b>Telegraph Hbr, Thetis Island</b>							
-	-	-	-	35	27	66	36	46	34	59	57	39	66	52	34	38	39	65	31	59	47	32	22	57	47	<b>Victoria</b> 🇨🇦						
41	35	65	48	58	46	65	61	44	64	63	36	50	45	73	40	62	53	36	35	61	58	38	<b>Anacortes</b> 🇨🇦									
33									67					76					36			32	12	<b>Deception Pass</b> ⌚								
14									54					61					17			31	19	21	<b>Deer Harbor, Orcas Island</b>							
17									44					53					24			36	22	27	14	<b>Echo Bay, Sucia Island</b>						
27	17	55	31	41	29	49	47	28	54	47	20	33	28	55	22	46	38	19	19	51	43	27	20	21	5	18	<b>Friday Harbor, San Juan Island</b> 🇨🇦					
20	10	51	23	34	21	42	40	21	50	39	14	25	21	48	14	39	31	14	11	44	34	20	26	28	9	17	11	<b>Roche Harbour, San Juan Island</b> 🇨🇦				
23									60					69					26			33	16	18	9	19	11	18	<b>Rosario, Orcas Island</b>			

🇨🇦 / 🇺🇸 Canadian /U.S. Customs Port  
 ⌚ Pass/Narrows – use current tables  
 \_\_ (underscore) Route via Dodd Narrows